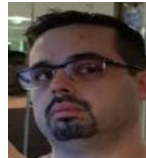
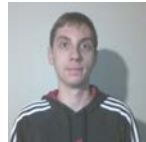


Team #1: Grill Buddy

- Joe Bequest
- Jeremy Pape
- Logan Faccio
- Keith Turner
- Eric Liban
- Luz Lezama



Product Description

- Multi-functional tool used for outdoor grilling
- A single device that will replace various components
- Can potentially save the user time and money while grilling.

Key Requirements

- Circuits must be covered because exposed sparks could cause an explosion.
- The probes must be accurate because undercooked meat or high gas concentration is dangerous.
 - Temperature (Celsius, Fahrenheit)
 - Gas Concentration(ppm)
- The Probes must be made of a clean material.
- The device must be able to withstand the high temperatures of the grill.
- The transmitters must not interfere with other devices.

Block Diagram

Base (Mounted on Grill)

Monitor (Portable unit)

