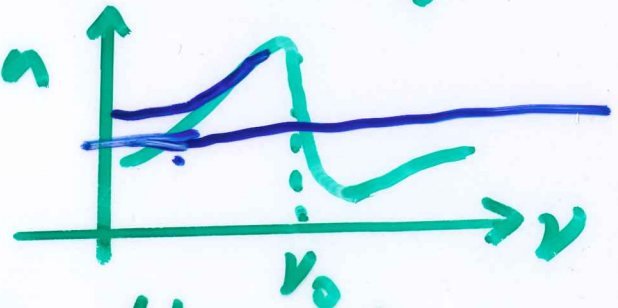


9/27/17

a) What material parameter has the following freq distribution

$\chi'$



b) A pulse propagate through a dispersive medium  $\Delta\lambda \uparrow \Delta\tau \downarrow D_\lambda < 0$



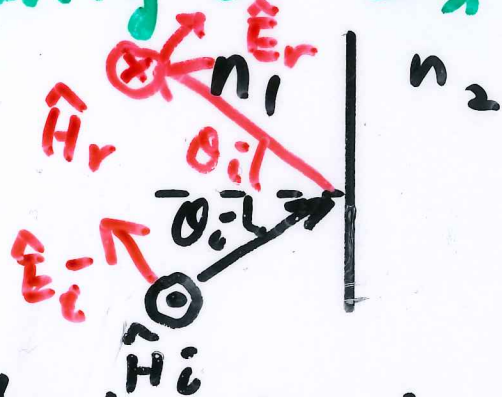
medium



What is polarity of  $D_\lambda$ ?

c) Complete the diagram with

$\hat{E}_i, \hat{E}_r, \hat{H}_r$



Bonus: What wave is in c).

polarization is the

p-polarization

or TM